



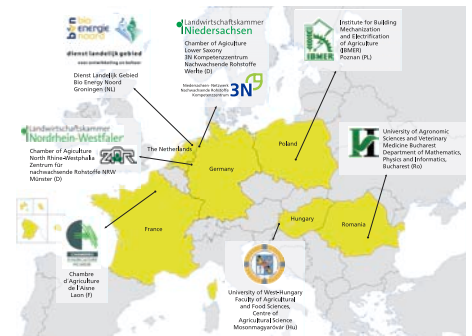
## Bio Fuels in Motion

# BioMotion

**Information, Motivation and Conversion strategies for Bio Fuels with consideration of the special regional structures BioMotion takes into account not just the first-generation fuels (plant oils and biodiesel), but also biogas, ethanol and BTL.**

### The project will:

- create and establish an expert cluster to bring the results acquired in the regions to the transnational Bio Fuel Network.
- create and establish 7 Bio Fuel Information Centres, one in each participating region.
- support and initiate best practice examples (beacons).
- motivate users with special campaigns, the BioMotion-Tour with vehicles powered by different Bio Fuels will demonstrate the possibilities of using Bio Fuels.
- establish value-added chains for rural areas **from field to tank**, in which producers, farmers, traders, plant processors and consumers can have profit.



**BioMotion will create conditions to accelerate the introduction of Bio Fuel production and use processes in Europe.**

**This will be done along three lines:**

### Knowledge development

- BioMotion creates a solid and extensive centralised knowledge and experience platform on production, distribution and application of different Bio Fuels.

### Beacons

- A number of beacons will show and demonstrate innovative technologies, processes and the use of different raw materials for the production and application of different Bio Fuels on a commercial scale.

### BioMotion Partners around Europe

#### Market development

- Increased awareness of the Bio Fuel market by informing and educating the various stakeholders in this field. BioMotion will offer new solutions to current problems and create innovative possibilities to optimise the use of Bio Fuels. The BioMotion project will stimulate enterprises and consumers in using Bio Fuels. It is expected that the Bio Fuel consumption, the number of filling stations and the quantity of Bio Fuel production capacity will increase in the participating regions.

